

EDUCATION

SEASON 2023

SHOALHAVEN

BE THE

ENTERTAINMENT

FIRST IN

CENTRE

LINE

Shoalhaven Entertainment Centre
would like to acknowledge the
Traditional Custodians of the land
on which we gather upon today.
We acknowledge their continuing
connections to the land, culture
and community. We pay respect to
Elders past, present and future.





CONTENTS

Introduction from Karen Patterson **2**

How to book tickets **3**

Primary shows **4-11**

Secondary shows **12-17**

Dance/PDHPE students **18**

Music students **20-21**

Good to know | Venue hire **22-23**

Thank you acknowledgements **24**

KAREN PATTERSON

AND THE SHOALHAVEN
ENTERTAINMENT CENTRE TEAM



WELCOME TO THE 2023 EDUCATION SEASON,

where we invite you and your students to be the first in line to experience an exciting collection of productions that are rich, relevant, and contemporary.

Primary students will be delighted by shake & stir theatre co's acclaimed adaptation of *Road Dahl's THE TWITS* and the madcap antics of Andy Griffith's *JUST LIVE ON STAGE*. Monkey Baa Theatre Company return with Mem Fox's iconic *POSSUM MAGIC* and we welcome Bangarra Dance Theatre with their first ever children's work *WARU – JOURNEY OF THE SMALL TURTLE*, for our littlest theatre goers.

Secondary students have three exceptional productions that meet curriculum outcomes. *Colleen McCullough's TIM* is adapted from the award-winning novel and will encourage conversation around neurodiversity and ageism. *THE END OF WINTER* examines our changing climate through a feminist lens. And finally, the iconic Bell Shakespeare bring romantic comedy *TWELFTH NIGHT* to the venue.

Connecting young people and the performing arts is one of the great joys of working at the Entertainment Centre. To see students make their way into the theatre and leave having been impacted by the power of performance is an absolute privilege for our team.

We look forward to seeing you and your students at the theatre this year.

HOW TO BOOK

STEP 1: BOOKING

When you identify the show/s you want to book, please call our helpful Box Office Administration Assistant on **02 4429 5754** to make a booking.

NB: When you call, please have approximate numbers and let us know if any students or teachers have specific access needs.

STEP 2: PAYMENT

Payment and final numbers are due three weeks prior to the event you are attending. Please ensure you pay no later than the due date on your invoice or your tickets may be released. Bookings made within three weeks of the performance will need to be paid in full within one week of confirmation. If you are having difficulty organising payment, contact us immediately on **02 4429 5754**.

PAYMENT METHODS

Credit Card: By phone

Bank Cheque: Cheques are to be made payable to "Shoalhaven Entertainment Centre"

STEP 3: WORKSHOPS AND TEACHER RESOURCES

Many shows programmed in the Shoalhaven Entertainment Centre Season have education workshops available. Depending on the show, these can be delivered before or after the performance, at the venue or at your school. Contact the marketing team to find out more: marketing@shoalhavenentertainment.com.au

Teacher resource kits will be provided once you have paid your balance. Resources are supplied by the production companies and are available for select shows only.

STEP 4: ON THE DAY

Printed tickets are not issued. When you arrive at the venue, our Front of House team will coordinate your students' entry into the theatre. Please arrive at least 20 minutes prior to the start time of the performance. Latecomers may be excluded or may not be admitted until a suitable break in the performance. If you are running late, please call the Box Office on **02 4429 5757**.

ADDITIONAL INFORMATION

For more information, Theatre Experience Guide and risk assessment information please visit shoalhavenentertainment.com.au/education

TICKETS

PRIMARY SHOWS

School Groups of 8+ students
\$20 per ticket

SECONDARY, DANCE/PDHPE AND MUSIC SHOWS

School Groups of 8+ students
\$25 per ticket

ALL SHOWS

One teacher free per school group of 8 (Additional teachers at student price)



★★★★★

**"PERFECT. YOU AND YOUR CHILD
DO NOT WANT TO MISS THIS
REMARKABLE PIECE OF THEATRE."**

Broadway World

shake & stir theatre co presents

ROALD DAHL'S THE TWITS

Adapted for the stage by shake & stir theatre co

Dahl's gruesome twosome The Twits, live on stage in a visually spectacular, delightfully-disgusting, revoltingly-funny production for the whole family.

Mr and Mrs Twit are the nastiest couple you could ever hope (not) to meet. Both are on a quest to be meaner than the other – but, is there someone out there who can out-twit the Twits?

Full of trickery and wickedly-funny pranks, Dahl's adored classic encourages us to treat others with love and care and proves that if you have good thoughts, they will shine out of your face like sunbeams.

You've read the book – it's time to experience this family classic from the wacky mind of the world's No. 1 Storyteller live on stage. Packed with Dahlicious mischief, hilarious mayhem and big belly laughs, The Twits is unmissable fun for all ages.

You won't believe your (glass) eyes.

WED 24 MAY, 12.30PM & 6PM

Auditorium | 55 mins (no interval)

AGE RECOMMENDATION

Early Stage 1, Stages 1, 2 & 3
Stages 4, 5 & 6: Drama

WARNINGS

Loud music and sound effects, strobe lighting, haze and two very nasty individuals.

PRICES

See page 3

CURRICULUM LINKS

Primary: Story-telling, Poetry, Book
Week Imagination, Playbuilding

Secondary: Transformation of Text,
Children's Theatre, Ensemble Theatre,
Magical Realism, Poetry

CREDITS

Adaptor *Nelle Lee*

Director *Ross Balbuziente*

Designer *Josh McIntosh*

Lighting Designer *Jason Glenwright*

Sound Designer *Guy Webster*

WHY SHOULD YOU BE FIRST IN LINE?

Roald Dahl wrote exceptional children's literature and shake & stir bring remarkable adaptations to the stage. This is a match made in heaven!

ADD ON

Post-show Q&A



Red Line Productions

JUST (TRICKING, ANNOYING, STUPID, CRAZY, DISGUSTING, SHOCKING, DOOMED) LIVE ON STAGE!

*Adapted from the JUST book series written by Andy Griffiths and illustrated by Terry Denton
Written by Robin Goldsworthy*

Andy Griffiths' awesome JUST series mashed together in a theatrical rodeo.

Every year Andy's school holds a short story competition and every year Andy writes an awesome, amazing, captivating, TERRIFYING story. But every year Andy is robbed of winning, thwarted by some dumb story about kittens and sunshine. How is it possible?!

Because Mr Rowe is against him, and he wouldn't know a good story if it jumped off the page and bit him on the bum. Anyway, that's all in the past. This year Andy knows that the prize is within his grasp. All he has to do is write the most INCREDIBLE story the world has ever read! Easy!

JUST (tricking, annoying, stupid, crazy, disgusting, shocking, doomed) LIVE ON STAGE! takes on the wonderful world of the JUST books by Andy Griffiths, vividly and hilariously bringing them to life on the stage with everything from invisibility pills and Mudmen, to vomiting dogs and death-defying balloon rides.

And it's definitely not for the faint-farted...we mean hearted!

MON 24 JUL, 6PM
TUE 25 JUL, 10AM & 12.30PM

Auditorium | 55 mins (no interval)

AGE RECOMMENDATION

Stages 2 & 3

WARNINGS

Loud fart noises, talking vegetables, a little bit of dog wee and a love story (gross).

PRICES

See page 3

CURRICULUM LINKS

Drama, Visual Arts, English & PDHPE

CREDITS

Director *Iain Sinclair*

ADD ON

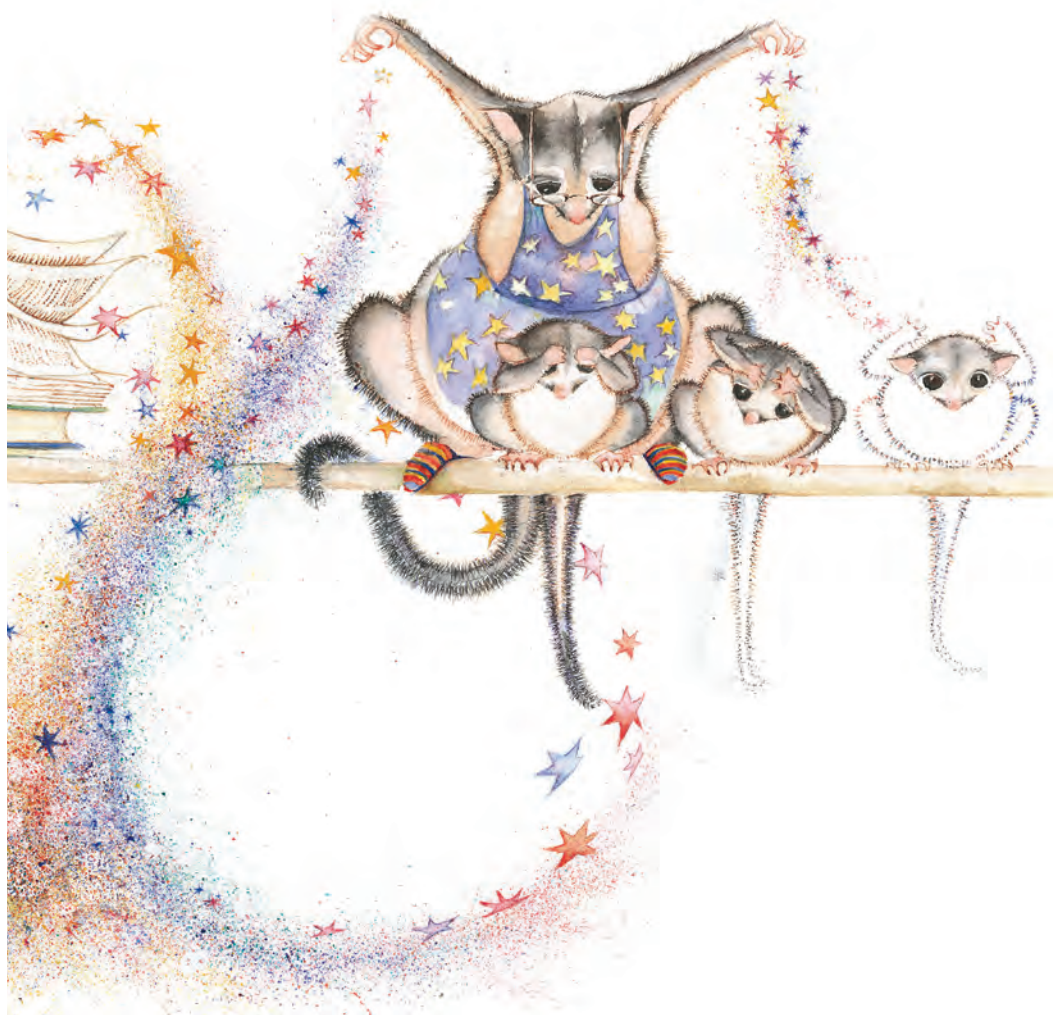
Post-show Q&A (15-20 mins)

WHY SHOULD YOU BE FIRST IN LINE?

Whether you know Andy Griffiths' hilarious books or not, this show is stuffed with all the jokes, gags and mayhem you could want in 55 mins of epic theatre!

**"PACK YOUR GRANDMA, PACK YOUR CHILD, PACK
ENOUGH VEGEMITE SANDWICHES AND LAMINGTONS
FOR ALL AND GO AND TREAT YOURSELF TO A BIT OF
THEATRICAL BUSH BEWITCHMENT."**

Theatre Now



A Monkey Baa Theatre Company production

POSSUM MAGIC

Based on the book by Mem Fox and Julie Vivas

Adapted by Eva Di Cesare and Sandra Eldridge. Directed by Sandra Eldridge

The magical stage adaptation of this beloved Australian story is back to celebrate its 40th birthday!

Grandma Poss loves making magic. She makes wombats blue and kookaburras pink. She makes dingoes smile and emus shrink. But one day, when danger arrives in the form of a snake, Grandma uses her most magical spell to make Hush invisible.

Hush has many wonderful adventures. But being invisible isn't all it's cracked up to be, and Hush longs to see herself again. One problem. Grandma Poss can't find the spell to make Hush visible again!

Using a clever, nuanced combination of live action, stage magic, an original soundscape, elements of puppetry and projected animation, Monkey Baa's award-winning creative team have translated the whimsical world of the book to a stunning live experience.

TUE 19 SEP, 10.30AM & 12.30PM

Auditorium | 50 mins (no interval)

AGE RECOMMENDATION

Early Stage 1, Stages 1, 2 & 3

PRICES

See page 3

CURRICULUM LINKS

Early Stage, Stage 1 and Stage 2: English, Drama, Music, Science, Geography. Full details on shoalhavenentertainment.com.au/education

CREDITS

Production Designer *Emma Vine*

Composer & Sound Designer *Nate Edmondson*

Lighting Designer *Matt Cox*

Vision Animator *David Bergman*

Magic & Illusion Designer *Adam Mada*

Movement Director *Sam Chester*

Puppetry Director *Alice Osborne*

WHY SHOULD YOU BE FIRST IN LINE?

Possum Magic is a playful and joyous tale loved by children (and parents). Don't miss your chance to see Grandma Poss, Hush and the whole gang live on stage!

ADD ON

Post-show Q&A

In school workshops (limited availability)



"A BEAUTIFUL PRODUCTION"

Sydney Morning Herald



Bangarra Dance Theatre

WARU

JOURNEY OF THE SMALL TURTLE

Under the star-illuminated skies of the Torres Strait, a green turtle navigates her way back to the beach where she was born. The season has started, and soon the island will welcome a new generation of hatchlings – amongst them, our small turtle friend, Migi!

In Bangarra's first dedicated work for children, join our heroine Migi as she undertakes a journey of discovery and survival. A contemporary saltwater Lagaw Kazil (Island Children) story inspired by the totemic system of the green turtle, *Waru – journey of the small turtle* is an interactive and immersive introduction to Torres Strait Islander culture and dance for children.

Waru provides teachers, parents and caregivers with a unique opportunity to open up conversations about climate change, caring for the environment and the traditional cultural values of respect and reciprocity.

FRI 27 OCT, 10AM & 12.30PM
SAT 28 OCT, 11AM

Auditorium | 45 mins (no interval)

AGE RECOMMENDATION

Early Learning, Early Stage 1 & Stage 1

PRICES

See page 3

CURRICULUM LINKS

Early Learning: children have a strong sense of identity, children are connected with and contribute to their world, children are confident and involved learners

Stage 1: Aboriginal and Torres Strait Islander histories and cultures

General capabilities: Critical and Creative thinking; Intercultural understanding; Personal and social capability.

CREDITS

Director *Stephen Page*

Cultural Creatives *Sani Townson and Elma Kris*

Writer *Hunter Page-Lochard*

Composers *Steve Francis and David Page*

Featured Songs by *Helen Anu, Leonora Adidi and Peggy Misi*

Set and Costume Design *Jacob Nash*

Lighting Design *Matt Cox*

Language Consultant *Leonora Adidi*

Artists Aka Malu - Storyteller *Elma Kris*

Performer *Aba Bero*

WHY SHOULD YOU BE FIRST IN LINE?

Little ones will learn about First Nations culture and our environment as they're transported to the star filled skies of the Torres Strait to join Migi the sea turtle for an adventure.

ADD ON

Post-show Meet & Greet



The development of *Waru – journey of the small turtle* was generously supported by the Restart Investment to Sustain and Expand (RISE) Fund – an Australian Government initiative and the Girsensohn Foundation.



Ben Goss and Jeannette Cronin. Image by Daniel Boudi.

Christine Dunstan Productions

COLLEEN MCCULLOUGH'S TIM

Adapted for the stage by Tim McGarry

An unlikely friendship...

Tim is a beautiful young man with a disability. Mary is a successful mid-50s business executive with a belief she can live a happy and comfortable solitary existence without friendship or love. Drawn to each other from their first meeting, Mary hires Tim as a gardener. But as the two enjoy a growing friendship, suspicion about Mary's motivation arises in the minds of those who wish to protect Tim.

Tim, the gripping and controversial novel by Colleen McCullough, has been adapted for the stage by Tim McGarry (*Boy Swallows Universe*, *There's a Sea in My Bedroom*). This new Australian play is filled with love, loss and acceptance, and explores the importance of embracing differences, opening oneself to the fullness of life, and the opportunities it has to offer.

WED 9 AUG, 8PM
THU 10 AUG, 11AM

Auditorium | 90 mins (no interval)

AGE RECOMMENDATION

Stages 5 & 6

WARNINGS

Low level offensive language, sexual references.

PRICES

See page 3

CURRICULUM LINKS

Stage 5: Scripted Drama (Realism),
English (Drama Texts)

Stage 6: Drama (Australian Drama and Theatre),
English Standard & English Advanced
(Outcomes 1, 4, 5, 6, 7 & 8)

Visit shoalhavenentertainment.com.au/education
for education resource materials and to purchase
your script.

CREDITS

Written by *Colleen McCullough*

Adapted for the stage by *Tim McGarry*

Directed by *Darren Yap*

Set Design by *James Browne*

Costume Design by *Lucy M Scott*

Associate Producer *Vanessa Wright*,

Red Line Productions

Cast, in alphabetical order: *Valerie Bader*,
Akkshey Caplash, *Jeanette Cronin*, *Ben Goss*,
Andrew McFarlane and *Julia Robertson*

WHY SHOULD YOU BE FIRST IN LINE?

An ensemble of Australia's finest
actors take the stage to bring this
controversial and iconic story to life.

ADD ON

*Teachers' Workshop with the Adapting
Writer, Tim McGarry (Term 1, 2023)*

★★★★★

**"IT'S A BRAVURA PERFORMANCE
FROM JANE PHEGAN... AS CRISP AND
CLEAR AS A FROSTY NIGHT, IT IS A
THEATRICAL EXPERIENCE OF BONE-
WARMING DEPTH AND OF HOPE."**

Reviews by Judith



Siren Theatre Co and Critical Stages Touring

THE END OF WINTER

By *Noëlle Janaczewska*. Directed by *Kate Gaul*.

A beautiful new production that asks, will climate change erase winter leaving it to exist only in fairy tales, paintings, and historical accounts?

In hot, bushfire-prone Australia our winters are becoming warmer and shorter. *The End of Winter* is about loss and resilience. It's about the places one can search for cold weather - places that can be reached via public transport and the imagination.

Multi-award-winning writer Noëlle Janaczewska's new work for the stage speaks to our current climate crisis. Written in the wake of the devastating 2019 bushfires, it asks: What's happening to winter?

The themes and ideas contained within *The End of Winter* lean into the most significant issue of our time – the changing climate and the loss of seasons.

FRI 15 SEP, 1PM & 8PM

Studio | 55 mins (no interval)

AGE RECOMMENDATION

Stages 4, 5 & 6

WARNINGS

Use of haze

PRICES

See page 3

CURRICULUM LINKS

Stages 4 & 5: Creative Arts, English, HSIE – Geography

Stage 6: Creative Arts, English, Society & Culture

CREDITS

Writer *Noëlle Janaczewska*

Producer and Director *Kate Gaul*

Production Designer *Soham Apte*

Composer *Nate Edmondson*

Co-Composer and Sound Designer *Kaitlyn Crocker*

Lighting Designer *Becky Russell*

Performer *Jane Phegan*

WHY SHOULD YOU BE FIRST IN LINE?

This powerful one woman show will make you gasp, laugh, and think about your own relationship with our changing climate, our country and our own lives.

ADD ON

Acting/Directing Masterclasses *with Kate Gaul*

Post-show Q&A

"BELL SHAKESPEARE HAS MASTERED THE ART
OF PRESENTING SHAKESPEARE IN A MANNER
THAT IS ACCESSIBLE TO THE MODERN-DAY
AUDIENCE, WHILE STILL ENDEARING THOSE
WHO LOVE THE TRADITION."

Australian Stage



Bell Shakespeare's

TWELFTH NIGHT

By William Shakespeare

Directed by Heather Fairbairn

'If music be the food of love, play on.' Act 1, Scene 1.

Viola is shipwrecked and believes her twin Sebastian lost to the ocean. Washed up in a strange new land, determined to survive, Viola disguises herself as a man named Cesario and finds work with Duke Orsino, only to fall head over heels in love with him. But Orsino is in love with Olivia, who – grieving for her brother – refuses all offers of romance. Until, that is, she meets Cesario for the first time. A whirlwind of passion ensues, leaving no one unaffected, not even Olivia's prudish housekeeper Malvolia, played by Jane Montgomery Griffiths (*A Midsummer Night's Dream*).

Heather Fairbairn's fresh retelling of Shakespeare's romantic comedy is a dark collision of hidden identities and unrequited love. Featuring all-new music by Sarah Blasko, *Twelfth Night* ultimately asks us to find light in the darkness.

TUE 10 OCT, 8PM

Auditorium | 2 hrs 30 mins (incl. interval)

AGE RECOMMENDATION

Stages 4, 5 & 6

PRICES

See page 3

CURRICULUM LINKS

Stages 4, 5 & 6: English, Drama

ADD ON

Post-show Meet and Greet

John Bell Scholarship Auditions

CREDITS

Designer *Charles Davis*

Composer *Sarah Blasko*

Cast includes *Jane Montgomery Griffiths*
(pictured)

WHY SHOULD YOU BE FIRST IN LINE?

Iconic Australian theatre company Bell Shakespeare presents this fun and chaotic romantic comedy about power, desire and the fickle nature of love.



"...A STYLISH, FLAWLESSLY
EXECUTED PHYSICAL ESSAY
ON THE HUMAN NEED FOR
CONNECTION"

The Age

ON

BY CIRCA

Created by Yaron Lifschitz with the Circa Ensemble

On by Circa is circus at its contemporary best - as thrilling as it is moving.

After the smash-hits of *Humans 2.0*, *Carnival of the Animals* and *Peepshow*, Brisbane's globally renowned Circa returns with their newest creation *On by Circa*.

A chance encounter. A touch. An improbable connection. *On by Circa* follows eight strangers whose lives cross in the courtyard of an apartment block. Over the course of a single night they will fight, love, laugh and find moments of beauty and transcendence.

Created by circus visionary Yaron Lifschitz, with a pulsating score from Melbourne composer Jethro Woodward and striking lighting design from Paul Jackson, *On by Circa* is an unmissable and powerful new work infused with fierce humanity and exceptional acrobatics.

MON 20 MAR, 8PM

Auditorium | 65 mins (no interval)

AGE RECOMMENDATION

Stages 4, 5 & 6

PRICES

See page 3

CURRICULUM LINKS

Stages 4, 5 & 6: PDHPE, Dance, Drama, Music

CREDITS

Director *Yaron Lifschitz*

Composer and Sound Designer *Jethro Woodward*

Costume Designer *Libby McDonnell*

Lighting Designer *Paul Jackson*

WHY SHOULD YOU BE FIRST IN LINE?

Tickets for this world renowned company are sought after across the globe. Don't miss their spectacular physicality, grace and strength on stage.

ADD ON

Post-show Meet & Greet

"IN TERMS OF THE FUTURE
OF AUSTRALIAN CHAMBER
MUSIC, THE REAL DEAL."

The Australian

ORAVA QUARTET

RENAISSANCE TO ROMANCE

Bringing breathtaking intensity to the classics of the string quartet canon.

The Orava Quartet has been hailed by Limelight as “*the most exciting young quartet on the block*”. Known for their genuinely thrilling performances, the Quartet – brothers Daniel and Karol Kowalik (violin and cello), violinist David Dalseno and violist Thomas Chawner – bring their unique sound and breathtaking intensity to the classics of string quartet music.

In their Shoalhaven debut, the Quartet perform Mozart’s masterful ‘String Quartet in B Flat Major’, showcasing the beauty of the cello, in a transcendent work. Alongside this are two glorious pieces of sacred music from the Renaissance period: Tomás Luis de Victoria’s angelic ‘O Magnum Mysterium’ and William Byrd’s divine ‘Ave Verum Corpus’, inspired by one of the most sacred texts of the Catholic faith. Rounding out the program is Borodin’s sublime ‘String Quartet no.2’. This romantic masterpiece - a moving dedication from the composer to his wife, to celebrate their wedding anniversary - retains all its charm and memorable melodies centuries later.

FRI 24 NOV, 8PM

Studio | 1 hr 40 mins (incl. interval)

AGE RECOMMENDATION

Stages 4, 5 & 6

PRICES

See page 3

CURRICULUM LINKS

Stages 4, 5 & 6 Music: Composing and Listening Outcomes

CREDITS

Violin *Daniel Kowalik*

Violin *David Dalseno*

Viola *Thomas Chawner*

Cello *Karol Kowalik*

WHY SHOULD YOU BE FIRST IN LINE?

Lauded by critics and adored by fans, these four young men will take your breath away with their stunning talent, musical intensity and world-class program.

ADD ON

Post-show Meet & Greet

GOOD TO KNOW...

THEATRE EXPERIENCE GUIDE

You don't know what you don't know right?

We have created a useful guide to help young people prepare for their experience at the Shoalhaven Entertainment Centre. It explains what will happen and how to act in a theatre for young people who may never have been to a show before. It can be downloaded from the Education page on our website, or you can request a printed copy.

ENCORE CAFÉ + CATERING

Our on-site café serves a selection of salads, sandwiches, wraps and drinks. We can also supply healthy lunch boxes for students at a reasonable price with prior notice. You can enquire about this option when you speak to our Box Office Administration Assistant.



PARKING

The Shoalhaven Entertainment Centre has easy drop-off and pick-up points for buses situated around the venue.

SURROUNDING AREA

The Shoalhaven Entertainment Centre has an expansive foyer within the building and grassed areas out the front where students can safely gather before and after the show.

HARRY SAWKINS PARK

This lovely park 200m from the Shoalhaven Entertainment Centre has shaded areas and benches. A great place to take students after the show to eat lunch and discuss the show before the journey home.

WHERE ARE WE?

Located conveniently on Bridge Road, Nowra near the Princes Highway, with ample parking and plenty of nearby facilities.

FREE TEACHER RESOURCE KITS

We can provide a free Resource Kit for most shows to assist teachers discover more and unpack each show in the classroom before and after the event.

Season and show information details, tickets and prices are correct at the time of printing, however, are subject to change where necessary and without notice.



OUR PLACE IS YOUR PLACE

The Shoalhaven Entertainment Centre has over 10 years of experience hosting successful events including performances, concerts and formals representing a wide cross section of primary and secondary schools. For venue hire information contact our Events team on **02 4429 5759** or **SEC_Events@shoalhavenentertainment.com.au**

BE THE FIRST TO KNOW

Add your name to join the Education Mailing List and be the first to know about shows, workshops and events for your school.

Sign up at **info@shoalhavenentertainment.com.au**

THANK YOU

Supporters of shows in the 2023 Season



The producers of the following shows have been assisted by the Australian Government through the Australia Council for the Arts, its arts and advisory body.

On by Circa, The Twits, JUST – Live on Stage, The End of Winter, Possum Magic, Twelfth Night, and Waru



The presentation of the following shows has been assisted by the Restart Investment to Sustain and Expand (RISE) Fund – an Australian Government initiative.

TIM, Waru



The producers of the following shows have been assisted through the New South Wales State Government through Create NSW.

The End of Winter, Possum Magic, Twelfth Night and Waru.



**Queensland
Government**

The producers of the following shows have been assisted through the Queensland State Government through Arts Queensland.

On by Circa, The Twits



Shoalhaven Entertainment Centre is a division
of the Shoalhaven City Council



The Twits
Photo by David Fell



Just - Live on Stage
Photo by Robert Catto



Waru - journey of the small turtle
Photo by Daniel Boud



Just - Live on Stage
Photo by Robert Catto



On by Circa
Photo by Pia Johnson



The End of Winter
Photo by Clare Hawley



SHOALHAVEN
ENTERTAINMENT
CENTRE

Bridge Road, Nowra NSW 2541

☎ 4429 5757

✉ info@shoalhavenentertainment.com.au

SHOALHAVENENTERTAINMENT.COM.AU

